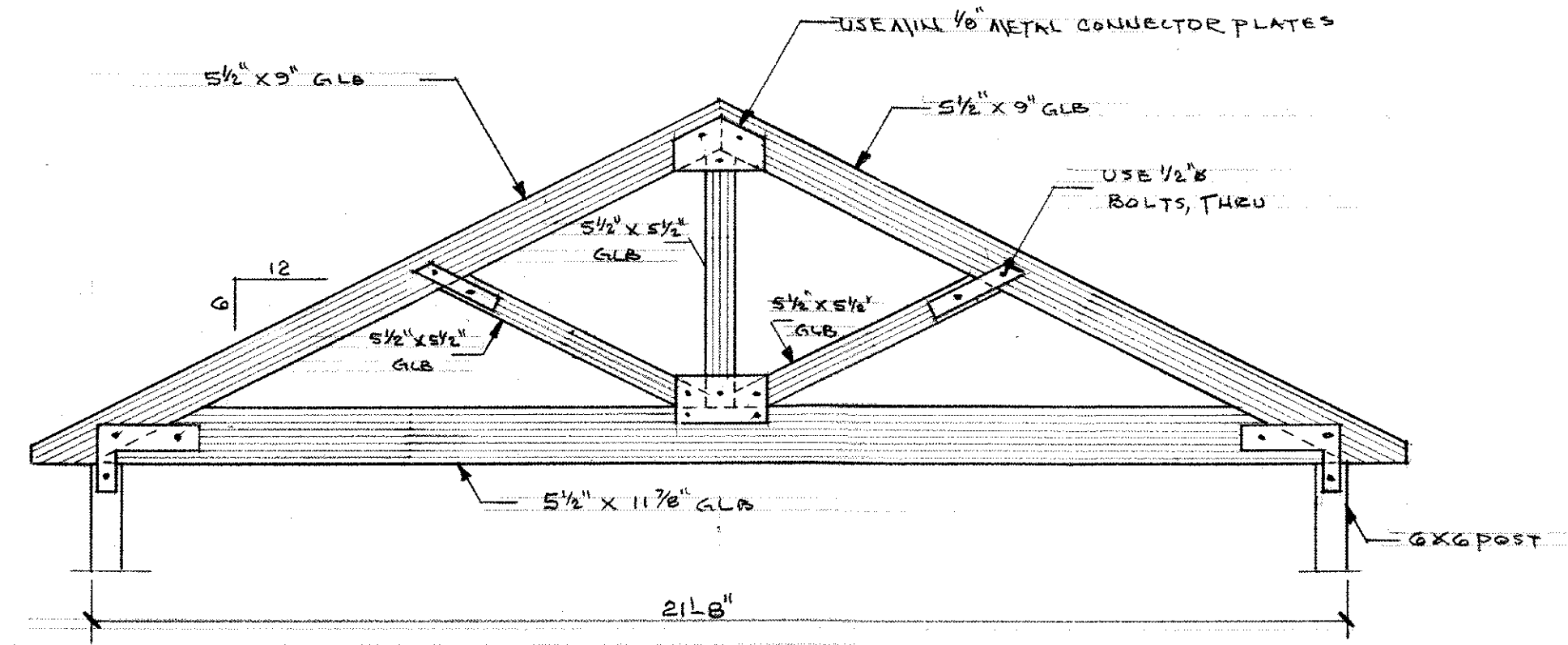
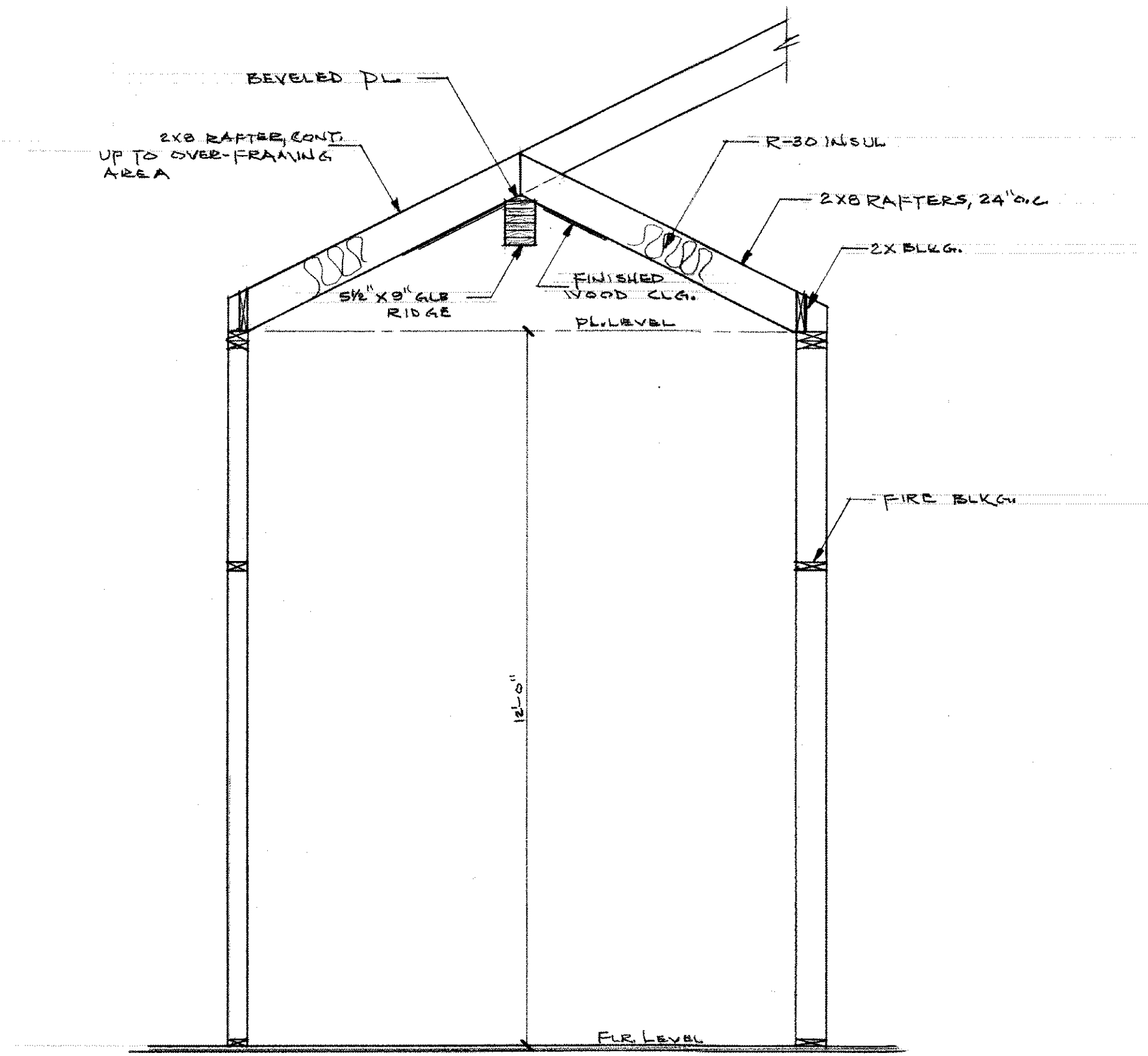


REVISIONS	BY
AUG. 2015	JK



GLB GABLE-END DESIGN - 3/8"=1'-0"



ENTRY CONSTRUCTION DETAILS - 1/2"=1'-0"

PLAN FOR COLUMBIA BASIN STUDENT HOMES
 HERMISTON, OREGON

Date AUG 2015
 Scale AS GIVEN
 Drawn JK
 Job PLAN 2294
 Sheet
 Of Sheets