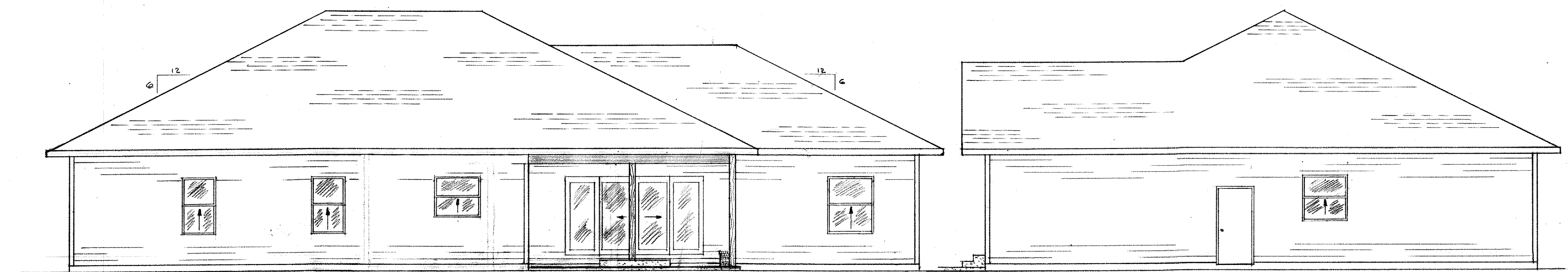
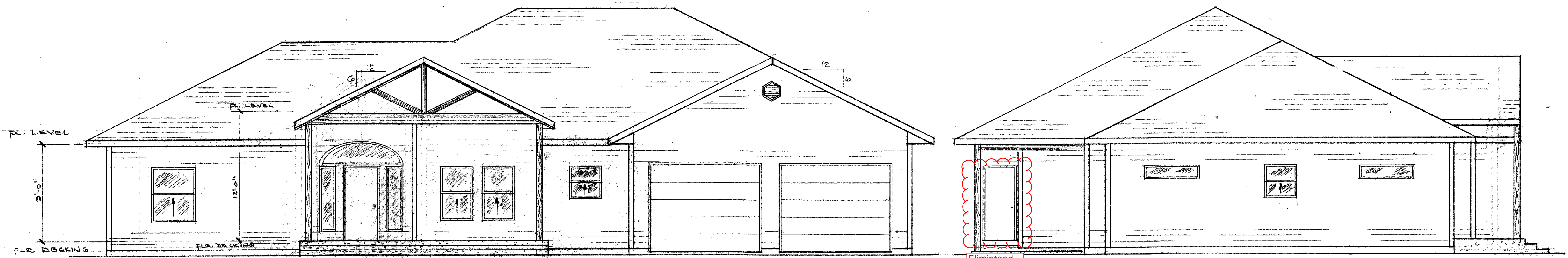


REVISIONS	BY
8-5-15	JG



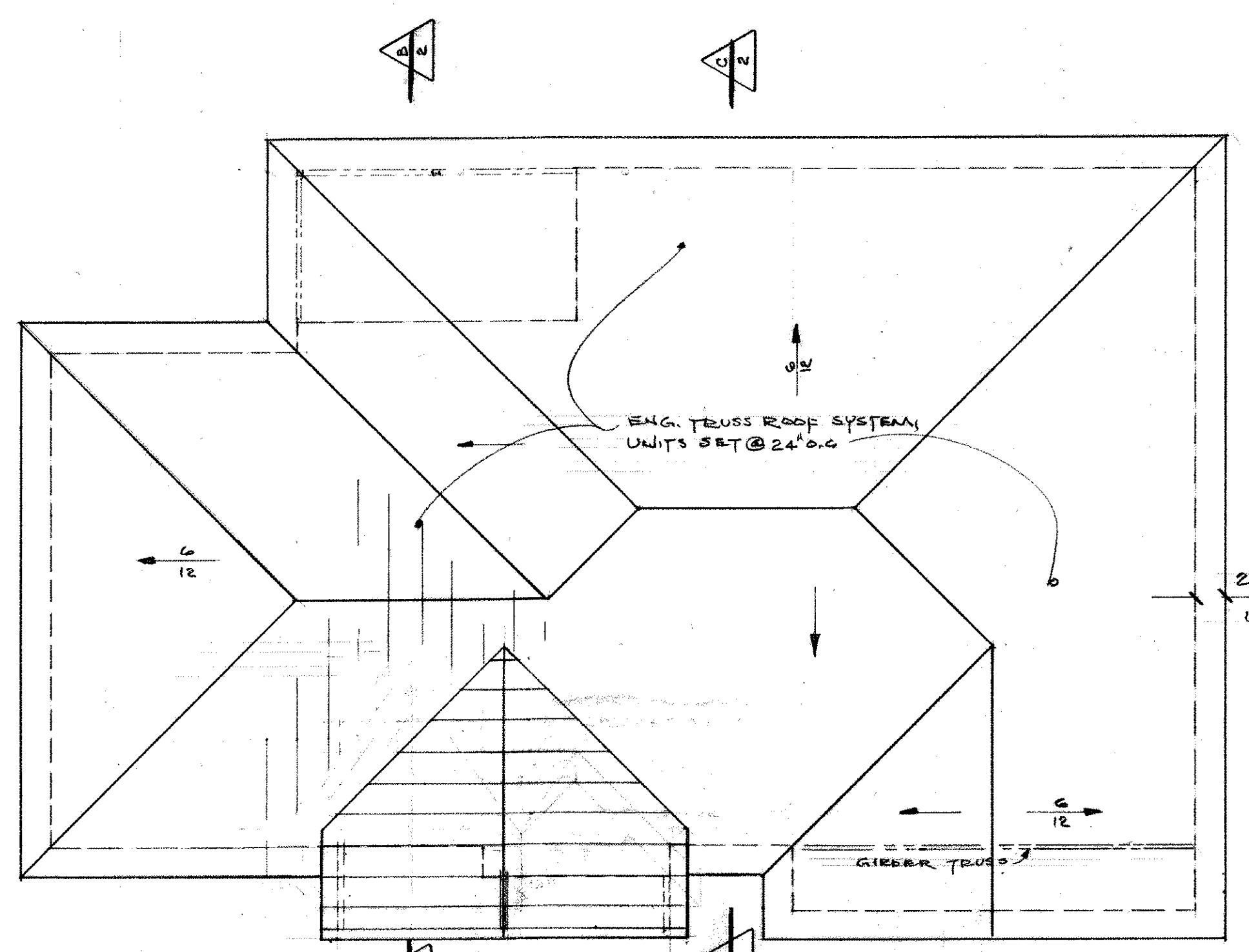
SOUTH ELEVATION - 3/16" = 1'-0"

WEST ELEVATION - 3/16" = 1'-0"

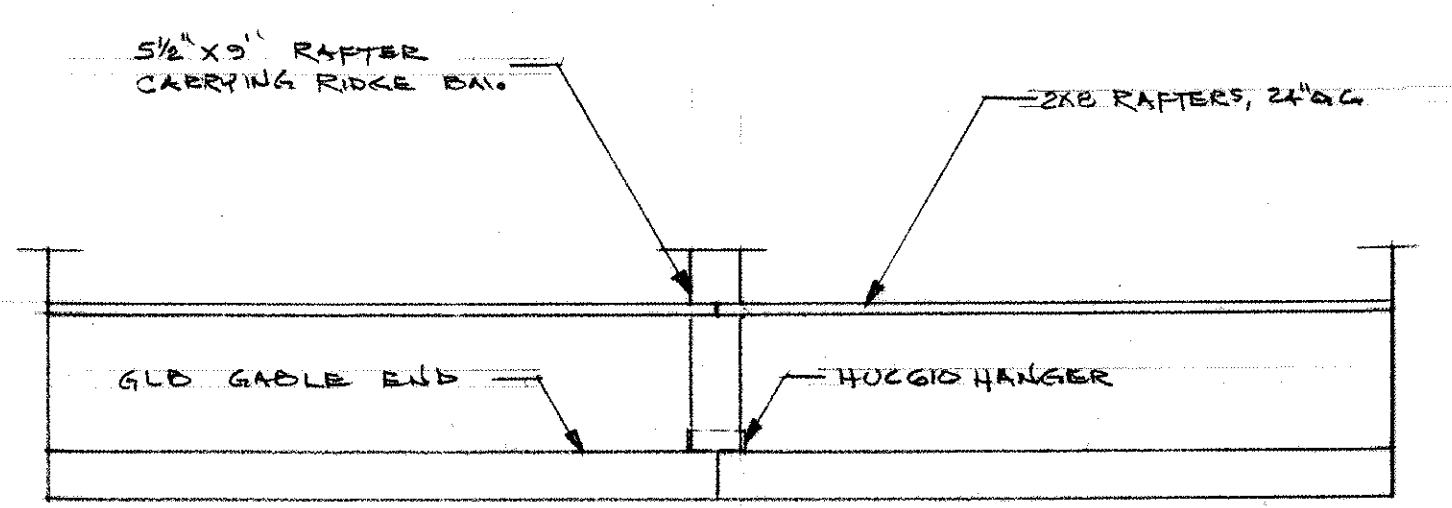


NORTH ELEVATION - 3/16" = 1'-0"

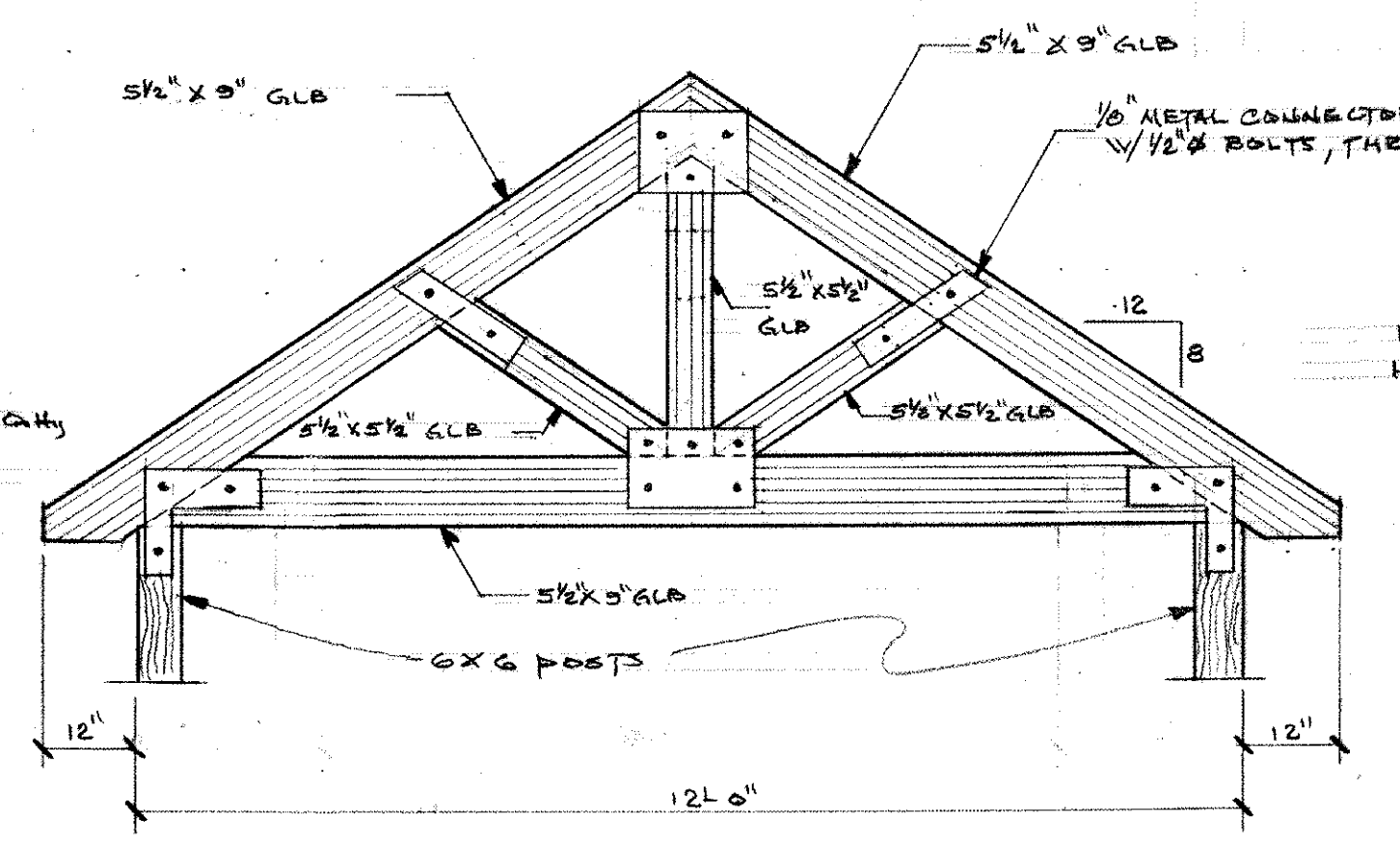
EAST ELEVATION - 3/16" = 1'-0"



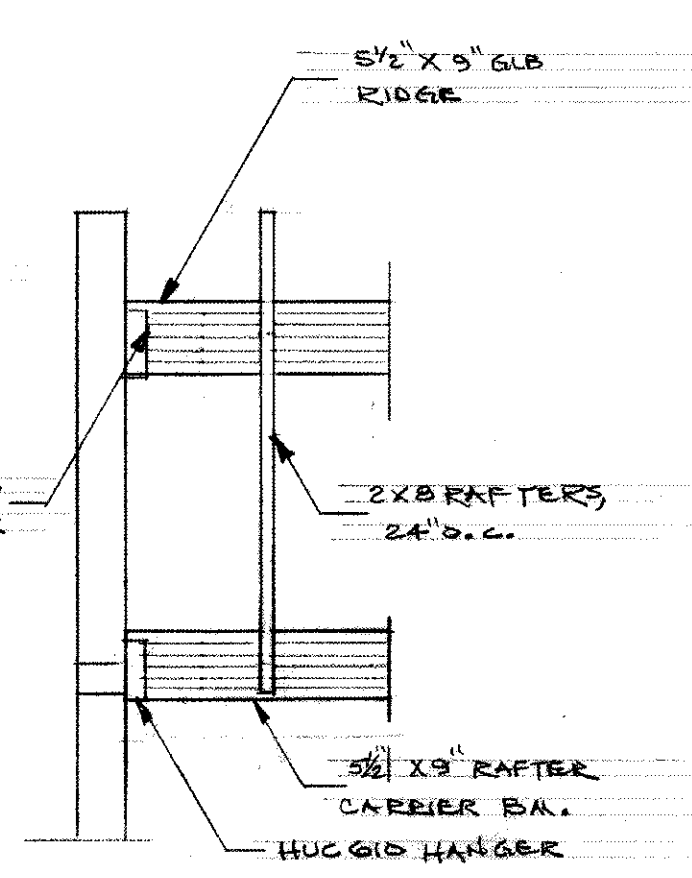
ROOF PLAN - 1/8" = 1'-0"



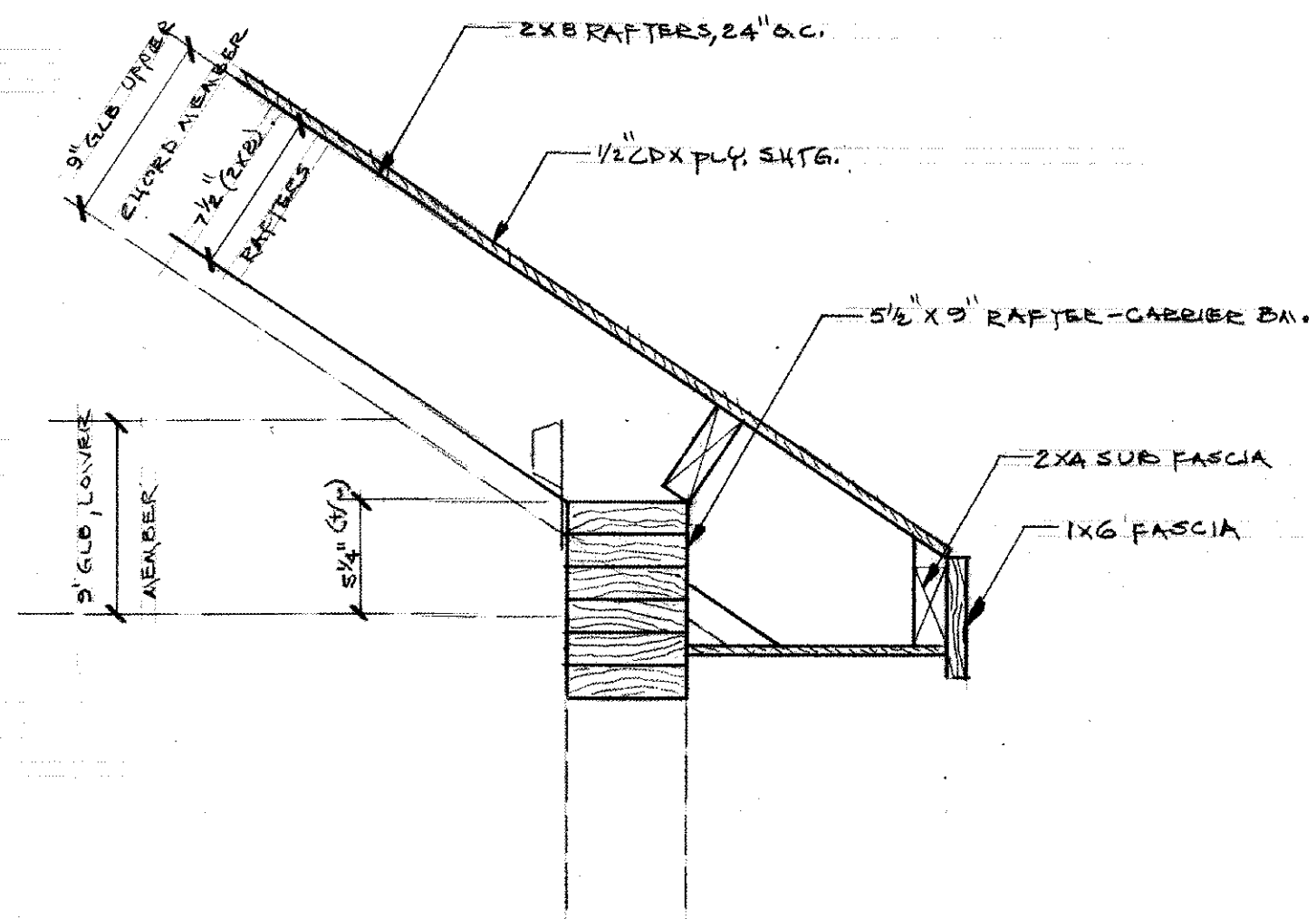
PLAN VIEW



GABLE END ELEVATION VIEW - 1/2\"/>



SIDE VIEW



RAFTER-BEAM CONNECTION - 1/2\"/>

PLAN FOR - COLUMBIA BASIN STUDENT HOMES
 HERMISTON, OREGON

Date: JULY, 2015
 Scale: AS GIVEN
 Drawn: [Signature]
 Job: PLAN 2204
 Sheet 4 of 4 Sheets